

# La Vida Es Un Carnaval

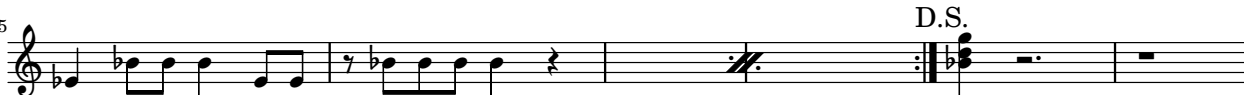
C Backing Trumpet

As sung by Celia Cruz. Arranged by Andrew Snyder

## Intro (1)



5



D.S.

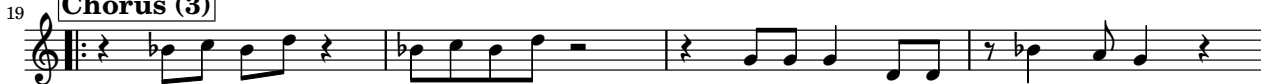
## Verse (2)



15



## Chorus (3)



23



## Break (hits)



Default Form: 1, 2, 3, 1, Hits, Solos, 1, 2, 3, 1, Hits

2

32

**Solos (Salsa Bridge)**

A musical staff in treble clef with a key signature of one flat (Bb). The notation consists of 10 measures. Measure 1: Bb4 quarter, C5 quarter, D5 quarter, quarter rest. Measure 2: quarter rest, dotted quarter G4. Measure 3: F#4 quarter, G4 quarter, A4 quarter, quarter rest. Measure 4: quarter rest. Measure 5: Bb4 quarter, C5 quarter, D5 quarter, quarter rest. Measure 6: quarter rest, eighth rest, eighth note E4, quarter note D4, quarter note C4. Measure 7: D4 quarter, E4 quarter, F4 quarter, quarter rest. Measure 8: Bb4 quarter, C5 quarter, D5 quarter, quarter rest. Measure 9: Bb4 half. Measure 10: Bb4 half. The piece ends with a double bar line and repeat dots.