

Ghost Town

Bb Tenor

The Specials (Arr. Geoff Lee)

Vamp



5



Head



17



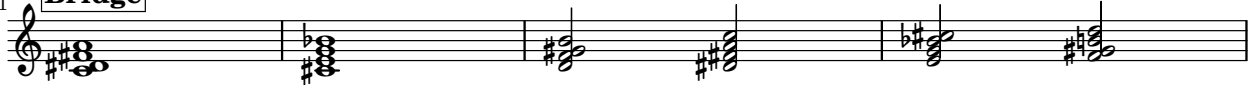
2



33



Bridge



Default Form: Vamp, Head, 2, Head, 2, Bridge, Solos/Drum break, Head, 2

2

45

Musical score for a guitar piece, measures 45-50. The score is written in treble clef and includes a key signature of one flat (B-flat). The piece consists of a series of chords, with a first ending bracket over measures 48-49 and a second ending bracket over measure 50. The chords are: G7b9 (measures 45-46), F7b9 (measures 47-48), E7b9 (measures 49-50), and D7b9 (measure 50).