

# Ghost Town

C Bass

The Specials (Arr. Geoff Lee)

## Vamp



5



## Head



17



25

## 2

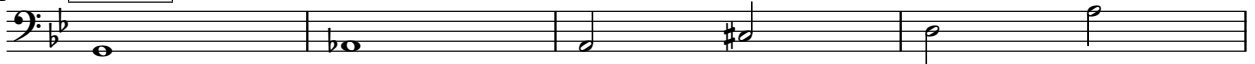


33



41

## Bridge



**Default Form:** Vamp, Head, 2, Head, 2, Bridge, Solos/Drum break, Head, 2

2

45

Musical notation for a bass line, measures 45-50. The notation is in bass clef with a key signature of one flat (B-flat). Measure 45 starts with a repeat sign. The notes are: B-flat (quarter), A-flat (quarter), G (quarter), F (quarter). Measure 46: B-flat (quarter), A-flat (quarter), G (quarter), F (quarter). Measure 47: G (quarter), F (quarter), E (quarter), D (quarter). Measure 48: E (quarter), D (quarter), C (quarter), B-flat (quarter). Measure 49: C (quarter), B-flat (quarter), A-flat (quarter), G (quarter). Measure 50: G (quarter), F (quarter), E (quarter), D (quarter). There are first, second, and third endings above measures 48 and 49, and a fourth ending above measure 50.